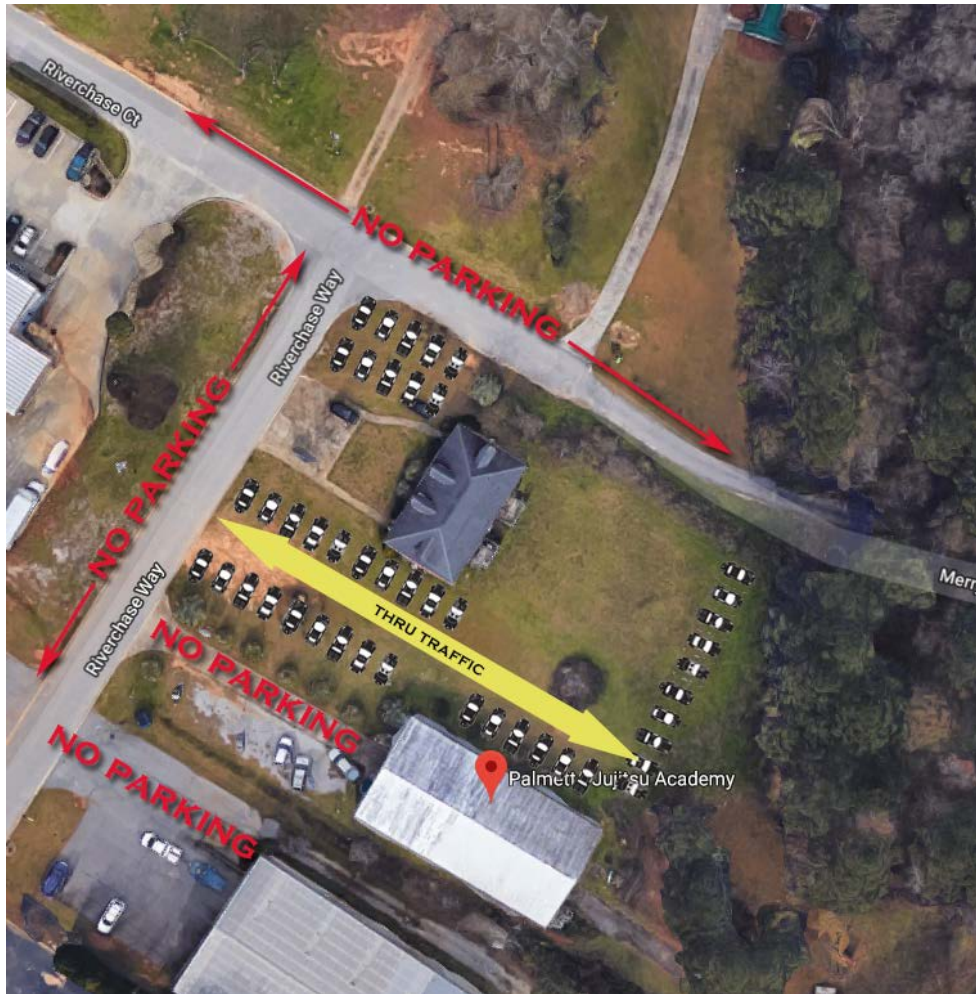


PARKING DURING CLINIC



Please use the map above for parking. PJA is in close proximity to several business and homes, so please let's be courteous and not get in their way. We will have signs posted as well. Thank you!!

**21st Annual
International Fall
Clinic**

Aumakua!

"Hawaiian for Ancestors"

**October 19 - 21,
2022**

**You won't want to
miss it!**

Register at

www.palmettojujitsu.com

**PALMETTO JUJITSU
ACADEMY**

327 Riverchase Way
Lexington, SC 29072

803-791-0764

Looking forward to
seeing you all!